



OFFICE & PUBLIC SPACE

DDK-LED PANEL LIGHT WHITE BASIC PARAMETERS

Light Source	LED
IP Rating	IP20
CRI (Ra>)	80
Warranty (Year)	2
Service Lifetime	> 80,000 hrs
Color temper. (CCT)	5000 K
Frame colour	White RAL 9016
Material	Aluminium Alloy+PMMA, LGP (Acrylic)
SMD LED	EPISTAR
Operating Temp. °C	-20/+40
Input Voltage	200-240 VAC / 50-60Hz
Certification	CE, RoHS
Photometric test	acc. STN EN 13032
Photometric Lab	Skúšobňa FEI STU, Ilkovičova 3, BA



DDK-LED PANEL LIGHT WHITE - represents only 11 mm thin luminaires designed for installation directly into the drywall and coffered ceiling. Frame width 18 mm in white colour increases the area lighting. Top quality materials and components are used from leading suppliers. Excellent thermal management extends LED life of up to 80,000 hours. Lamps comply with value glare UGR <19 for office use.

Features:

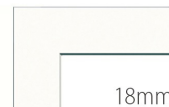
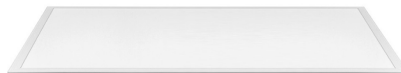
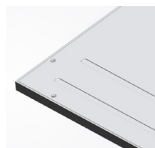
- 1100 lm / W
- UGR <19 for office use
- Conventional, dimmable
- Energy efficiency class A +
- White frame color RAL 9003
- No flicker UV, instant on / off
- Low weight and ultra slim design
- Power consumption is less than 50%**
- Versions : suspended, recessed with / without spring
- External ballast, LED constant current high power factor

Applications:

Offices, boutiques, receptions, shops, showrooms, entrance halls, corridors



Type	Power +/-10%	Lumen +/- 9,3%	Dimensions
	(W)	(lm)	mm
		5000K	
DDK-LED 600x600 DDK-LP36600600	36	3600	595X595X11
DDK-LED 1200x300 DDK-LP361200300	36	3600	1195X295X11



18mm



www.ddk-led.eu

ddk•LED
TECHNOLOGY SERVICES

business@ddk-led.eu

